

London Street-O Races 2012/13



South London Orienteers are holding a series of Street Orienteering (Street-O) events once a month between September 2012 and May 2013 (see exact dates below). Each evening consists of a run of up to 60 minutes, followed by a social event with food and drink where you can meet up with club members. The provisional 2012/13 schedule is set out below.

Tue 11 September 2012 Chelsea	Wed 10 October 2012 Waterloo	Tue 13 November 2012 Bank
Tue 11 December 2012 Pimlico	Tue 8 January 2013 Southfields	Tue 12 February 2013 Teddington
Tue 12 March 2013 Highbury & Islington	Tue 9 April 2013 Bethnal Green	Tue 7 May 2013 Greenwich

What is Street-O? An urban orienteering race under the street lights! You are given a special map of the local area to help you find specific locations where you will have to answer a question eg “name of pub landlord” or “colour of door at no. 20”.

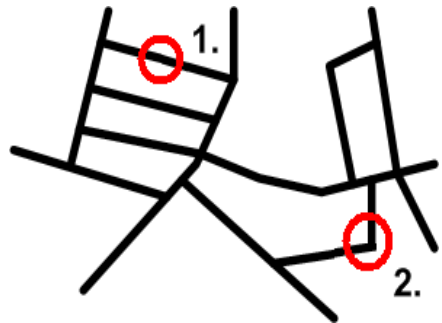
Each question is assigned a points value – generally the ones further away are worth more points. The aim is to score as many points as possible within a 60 minute time limit.

When? Usually turn up between around 6:30 to 7.30pm (check website in advance).

How much? £2 entry fee (£1 discount for orienteering club members & students).

Who can take part? Everyone is welcome. The events are particularly suitable for people who have never tried orienteering before, and are an excellent opportunity to meet club members and find out more.

Further details? Full info on each event will be posted on the club website (see link below) a few weeks before each race. To find out more email streeto@sloweb.org.uk



Full details on www.sloweb.org.uk